

# Quick Start Guide

## Rhio232

Serial I/O Manager



### RJ45 Pinout & Cabling

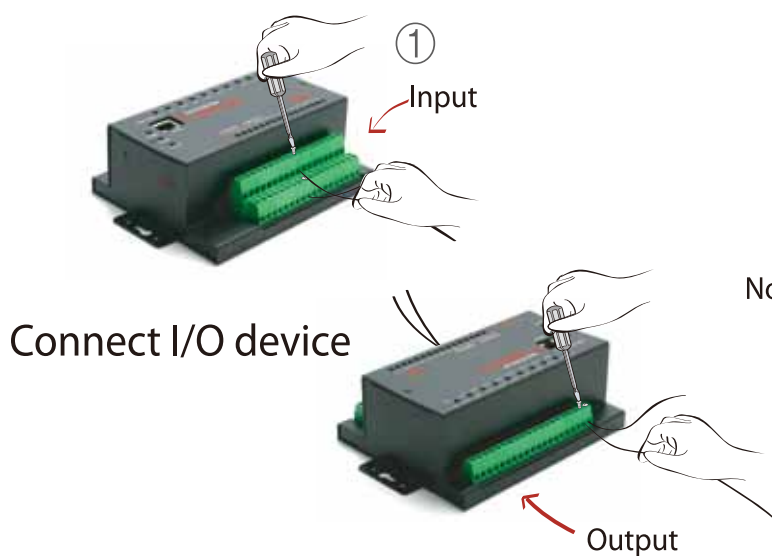
RS232 RJ45 Pinout	Pin	Signal	Rhio232	Host
		1	RTS	6 TxD ----- RxD
	2	DTR	3 RxD ----- TxD	3
	3	TxD	4 GnD ----- GnD	5
	4	GND	2 DTR ----- ----- DCD	1
	5	-	----- DSR	4
	6	RxD	7 DSR -- ----- DTR	6
	7	DSR	1 RTS ----- CTS	8
	8	CTS	8 CTS ----- RTS	7

### Rhio232 Terminal Block Description

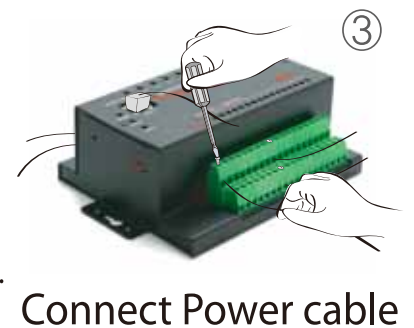
Terminal Block	Description
Power Input	PWR_A and PWR_B
	Ref and 5V Out : Analog reference voltage (2~5V)
Analog Input	AI1 ~ AI4
Digital Input	DI1 ~ DI12

RS232 RJ45 pinout for I/O configurations, control and monitoring

### Connection

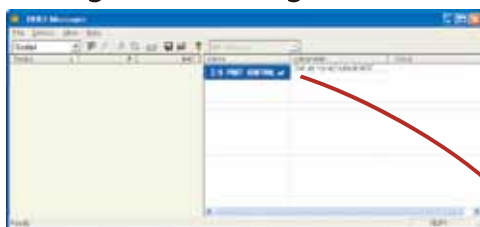


Note: Connect to the device by plugging the corresponding adapter for the device, i.e. RJ45-DB9F adapter for PC.



### Configuration

Configuration using the Rhio manager



User can configure Rhio232 using the Rhio manager on serial environment

Click on the I/O PORT CONTROL button to see the I/O port control screen



Download Rhio Manager and User Manual from Sena website at <http://www.sena.com/support/downloads/>

Visit us at [www.sena.com](http://www.sena.com)

Copyright 1998-2012, Sena Technologies, Inc. All rights reserved.