

# Quick Start Guide

## Rhio10

Remote I/O Manager



### RJ45 Pinouts

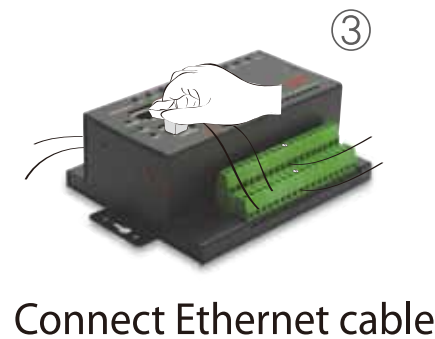
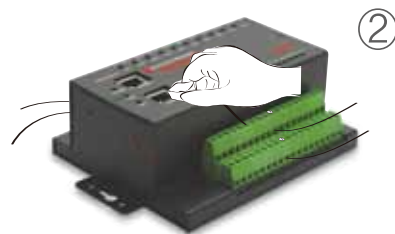
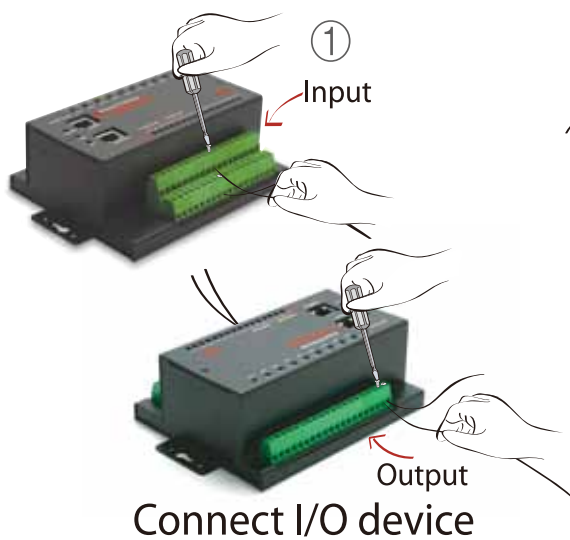
	Pin	Signal
RS232 RJ45 Pinout	1	RTS
	2	DTR
	3	TxD
	4	GND
	5	-
	6	RxD
	7	DSR
	8	CTS

RS232 RJ45 pinout for network configuration

### Rhio10 Terminal Block Description

Terminal Block	Description
Power Input	PWR_A and PWR_B
	Ref and 5V Out : Analog reference voltage (2~5V)
Analog Input	AI1 ~ AI4
Digital Input	DI1 ~ DI12
Digital Output	DO1 ~ DO10

### Connection

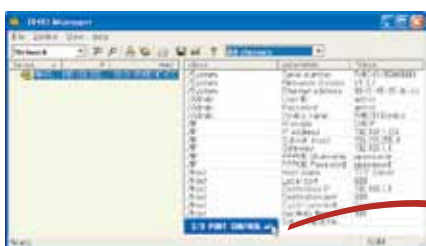


### Configuration

User can choose one of the two processes below

Default Log-in ID/Password is admin/admin.

1. Configuration using the Hyper terminal or Telnet
2. Configuration using the Rhio manager



User can configure Rhio10 using the Rhio manager on Ethernet networks



Click on the I/O PORT CONTROL button to see the I/O port control screen

You may download the Rhio manager and User Manual from Sena website at <http://www.sena.com/support/downloads/>.

For more information, refer to the User Manual.

Visit us at [www.sena.com](http://www.sena.com)

Copyright 1998-2012, Sena Technologies, Inc. All rights reserved.