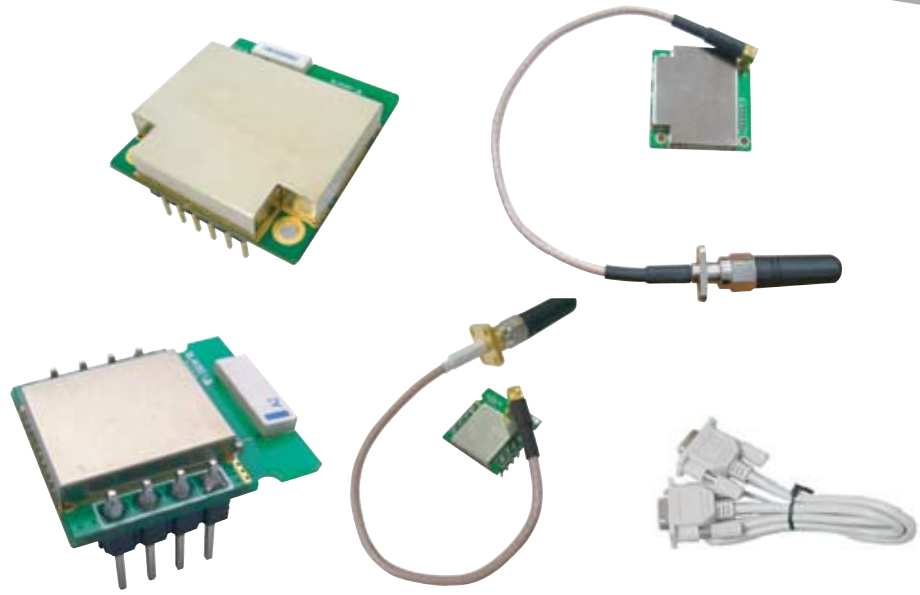


Quick Start Guide

Parani-ESD100/110/200/210

OEM Bluetooth-Serial module



Pinout & Cabling

Parani-ESD100/110

| Pin no. | Pin name | Direction | Description | Signal Level |
|---------|----------|-----------|---------------------------------------|--------------|
| 1 | GND | | Power Ground | Ground |
| 2 | TXD | Output | UART data out | TTL |
| 3 | RXD | Input | UART data input | TTL |
| 4 | RTS | Output | UART Ready to Send | TTL |
| 5 | CTS | Input | UART Clear to Send | TTL |
| 6 | VDD | Input | DC input (3.0 ~ 3.3V) | Power |
| 7 | Pairing | Input | Pairing input (Active Low) | TTL |
| 8 | Status | Output | Bluetooth Connect Detect (Active Low) | TTL |
| 9 | DSR | Input | Data Set Ready | TTL |
| 10 | DTR | Output | Data Terminal Ready | TTL |
| 11 | RST | Input | Reset (Active Low) | TTL |
| 12 | GND | | Power Ground | Ground |

Parani-ESD200/210

| Pin no. | Pin name | Direction | Description | Signal Level |
|---------|----------|-----------|---------------------------------------|--------------|
| 1 | GND | | Power Ground | Ground |
| 2 | VDD | Input | DC input (3.0 ~ 3.3V) | Power |
| 3 | Status | Output | Bluetooth Connect Detect (Active Low) | TTL |
| 4 | RST | Input | Reset (Active Low) | TTL |
| 5 | CTS | Input | UART Clear to Send | TTL |
| 6 | RTS | Output | UART Ready to Send | TTL |
| 7 | TXD | Output | UART data out | TTL |
| 8 | RXD | Input | UART data input | TTL |

Connection

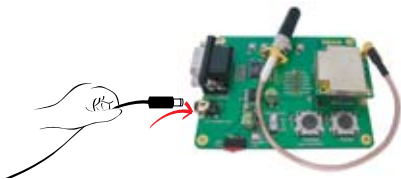
① Connect default(Stub) antenna to ESD Series



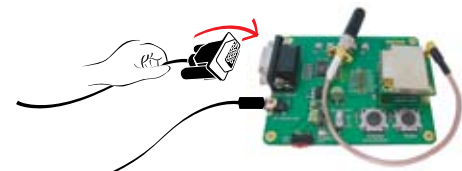
② Connect ESD Series to Jig Board



③ Connect Power supply to Jig Board



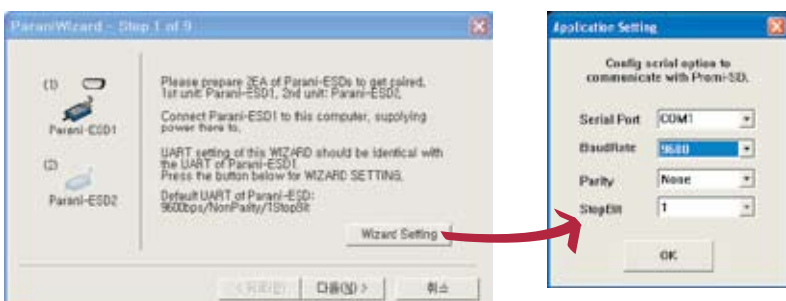
④ Connect serial cable to Jig Board



Configuration

I. Configuration using the ParaniWizard

ParaniWizard is used for simple configuration of point-to-point communications between two Parani-ESD units.



Follow the steps in the ParaniWizard

Parani-ESD Series default configuration is 9600 bps Baud, 8 Data bit, No Parity, 1 Stop bit and H/W flow control.

II. Configuration using the ParaniWin or Hyper terminal program

Using ParaniWin or Hyper terminal program, user can make pairing in any of the following situations.

- Between two Parani-ESD units.
- Between a Parani-ESD unit and other Bluetooth device.

For connecting to other Bluetooth device, configuration mode must be set to "Mode 3(Connectable and Discoverable)".

For more information, refer to the User Manual.

You may download the ParaniWin, ParaniWizard and User Manual from Sena website at <http://www.senaindustrial.co.kr/support/downloads/>

Visit us at www.senaindustrial.co.kr

Copyright 1998-2012, Sena Technologies, Inc. All rights reserved.